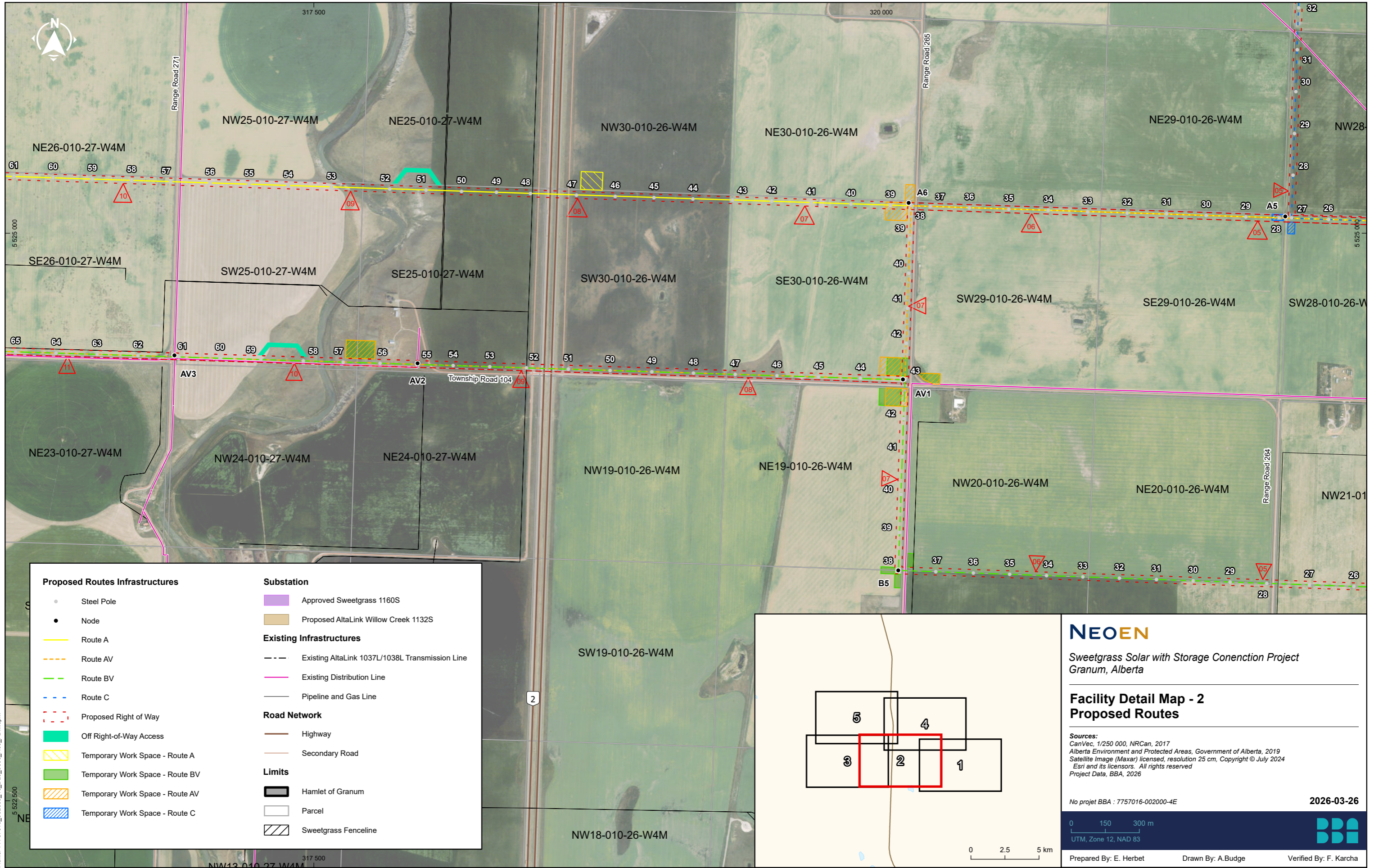
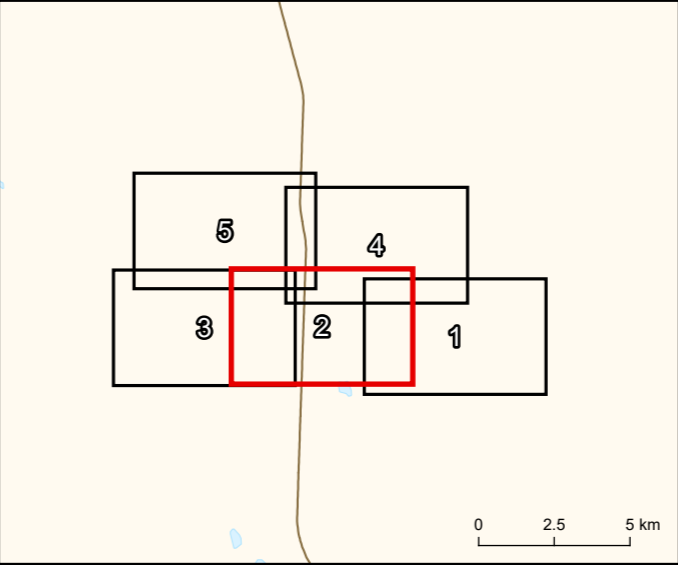


Fichier : 7757016_002000_40_D20_0009_R00_FDM.aprx



Proposed Routes Infrastructures		Substation	
●	Steel Pole	■	Approved Sweetgrass 1160S
●	Node	■	Proposed AltaLink Willow Creek 1132S
—	Route A	Existing Infrastructures	
- - -	Route AV	- - -	Existing AltaLink 1037L/1038L Transmission Line
- - -	Route BV	—	Existing Distribution Line
- - -	Route C	—	Pipeline and Gas Line
- - -	Proposed Right of Way	Road Network	
■	Off Right-of-Way Access	—	Highway
■	Temporary Work Space - Route A	—	Secondary Road
■	Temporary Work Space - Route BV	Limits	
■	Temporary Work Space - Route AV	■	Hamlet of Granum
■	Temporary Work Space - Route C	□	Parcel
		▨	Sweetgrass Fenceline



NEOEN
Sweetgrass Solar with Storage Connection Project
Granum, Alberta

**Facility Detail Map - 2
Proposed Routes**

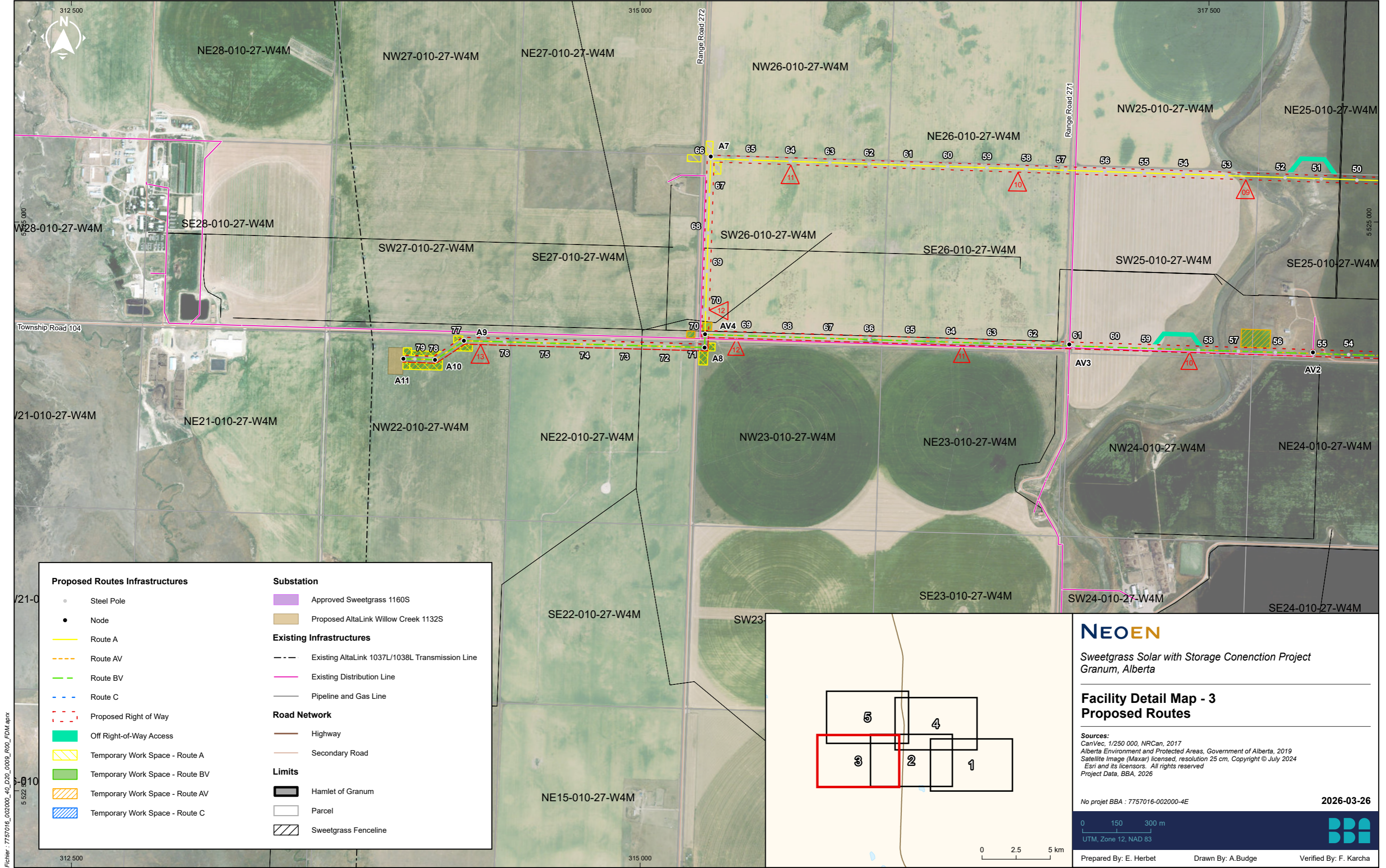
Sources:
CanVec, 1/250 000, NRCan, 2017
Alberta Environment and Protected Areas, Government of Alberta, 2019
Satellite Image (Maxar) licensed, resolution 25 cm, Copyright © July 2024
Esri and its licensors. All rights reserved
Project Data, BBA, 2026

No projet BBA : 7757016-002000-4E 2026-03-26

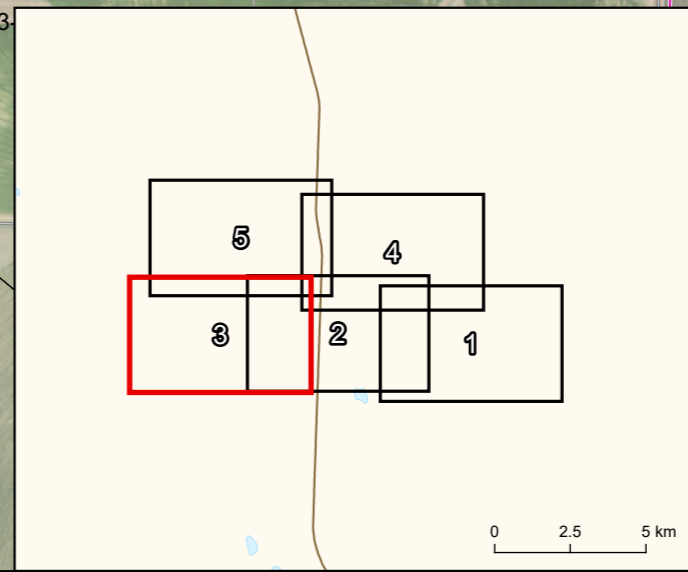
0 150 300 m
UTM, Zone 12, NAD 83

Prepared By: E. Herbet Drawn By: A.Budge Verified By: F. Karcha

Fichier : 7757016_002000_40_D20_0009_R00_FDM.aprx



Proposed Routes Infrastructures	Substation
● Steel Pole	Approved Sweetgrass 1160S
● Node	Proposed AltaLink Willow Creek 1132S
— Route A	Existing Infrastructures
- - - Route AV	- - - Existing AltaLink 1037L/1038L Transmission Line
- - - Route BV	— Existing Distribution Line
- - - Route C	— Pipeline and Gas Line
- - - Proposed Right of Way	Road Network
Off Right-of-Way Access	— Highway
Temporary Work Space - Route A	— Secondary Road
Temporary Work Space - Route BV	Limits
Temporary Work Space - Route AV	Hamlet of Granum
Temporary Work Space - Route C	Parcel
	Sweetgrass Fenceline



NEOEN

Sweetgrass Solar with Storage Connection Project
Granum, Alberta

Facility Detail Map - 3
Proposed Routes

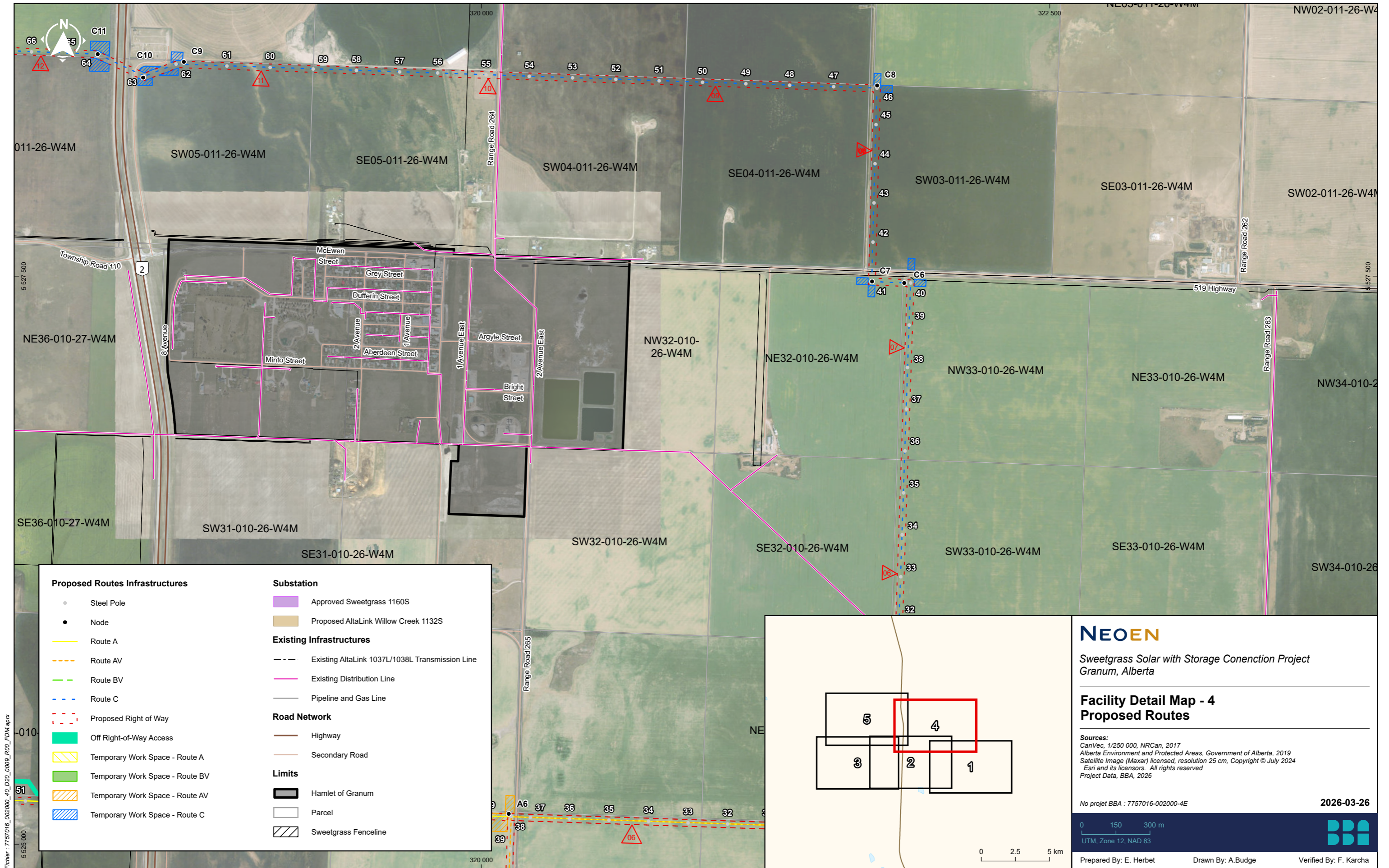
Sources:
CanVec, 1/250 000, NRCan, 2017
Alberta Environment and Protected Areas, Government of Alberta, 2019
Satellite Image (Maxar) licensed, resolution 25 cm, Copyright © July 2024
Esri and its licensors. All rights reserved
Project Data, BBA, 2026

No projet BBA : 7757016-002000-4E 2026-03-26

0 150 300 m
UTM, Zone 12, NAD 83

Prepared By: E. Herbet Drawn By: A.Budge Verified By: F. Karcha

Fichier : 7757016_002000_40_D20_0009_R00_FDM.aprx



Proposed Routes Infrastructures		Substation	
●	Steel Pole	■	Approved Sweetgrass 1160S
●	Node	■	Proposed AltaLink Willow Creek 1132S
—	Route A	Existing Infrastructures	
- - -	Route AV	- - -	Existing AltaLink 1037L/1038L Transmission Line
- - -	Route BV	—	Existing Distribution Line
- - -	Route C	—	Pipeline and Gas Line
- - -	Proposed Right of Way	Road Network	
■	Off Right-of-Way Access	—	Highway
■	Temporary Work Space - Route A	—	Secondary Road
■	Temporary Work Space - Route BV	Limits	
■	Temporary Work Space - Route AV	■	Hamlet of Granum
■	Temporary Work Space - Route C	□	Parcel
		▨	Sweetgrass Fenceline

NEOEN

Sweetgrass Solar with Storage Connection Project
Granum, Alberta

Facility Detail Map - 4
Proposed Routes

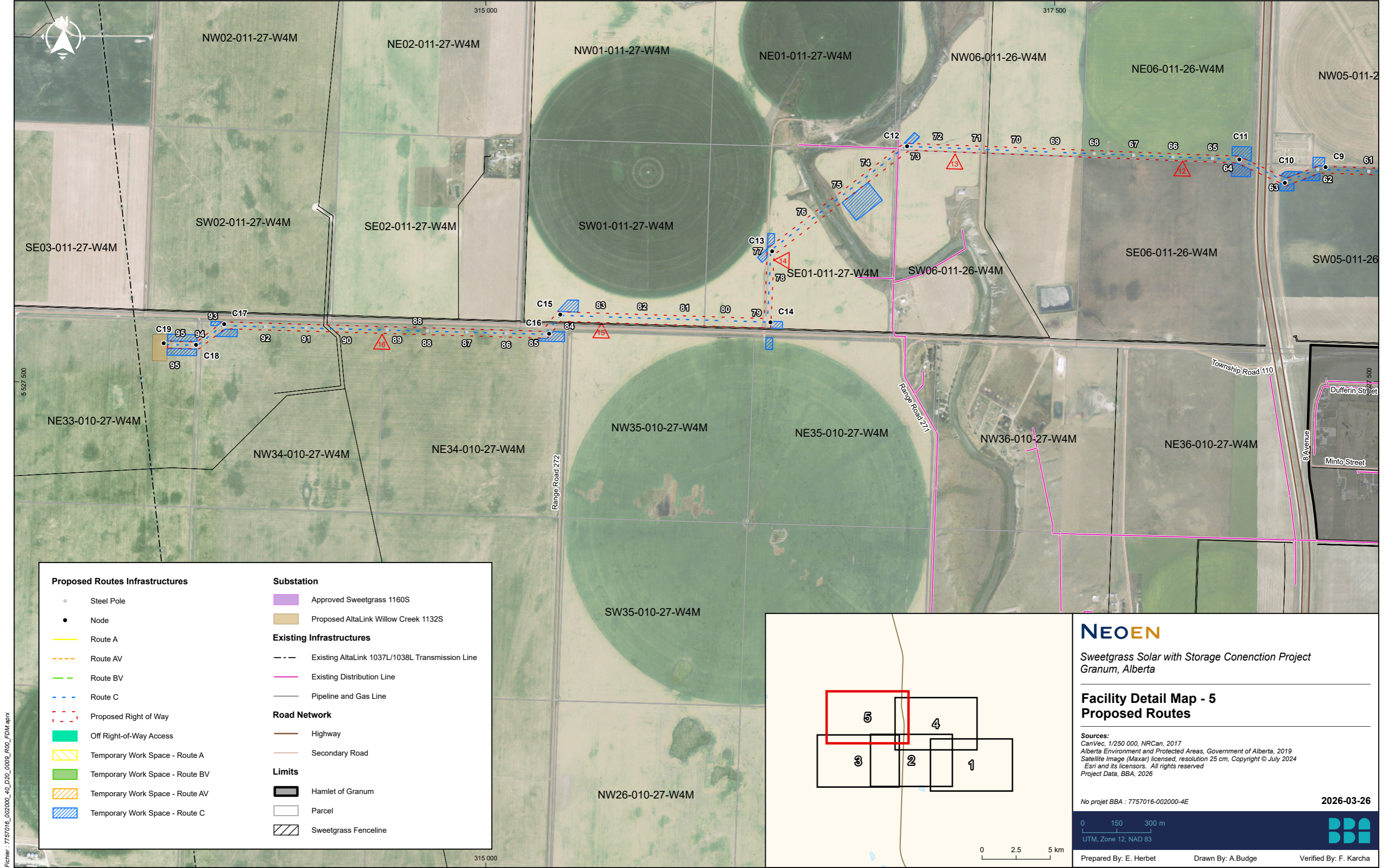
Sources:
CanVec, 1/250 000, NRCan, 2017
Alberta Environment and Protected Areas, Government of Alberta, 2019
Satellite Image (Maxar) licensed, resolution 25 cm, Copyright © July 2024
Esri and its licensors. All rights reserved
Project Data, BBA, 2026

No projet BBA : 7757016-002000-4E 2026-03-26

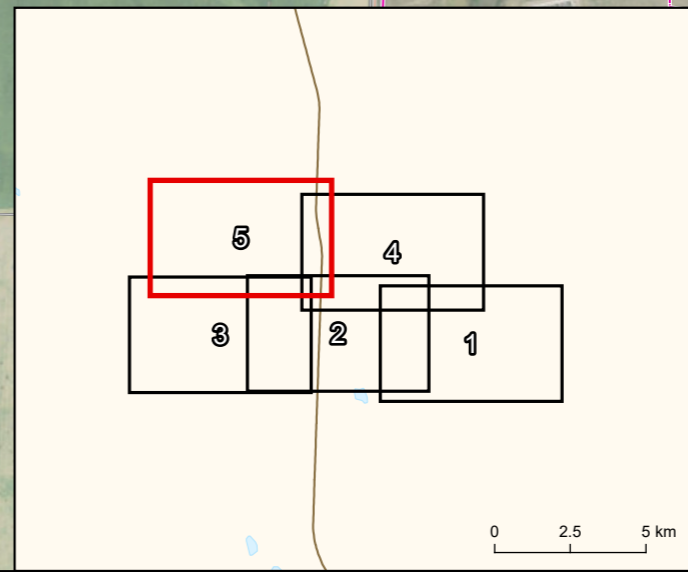
0 150 300 m
UTM, Zone 12, NAD 83

Prepared By: E. Herbet Drawn By: A.Budge Verified By: F. Karcha

Fichier : 7757016_002000_40_D20_0009_R00_FDM.aprx



Fichier : 7757016_002000_40_D20_0009_R00_FDM.aprx



NEOEN

Sweetgrass Solar with Storage Connection Project
Granum, Alberta

Facility Detail Map - 5
Proposed Routes

Sources:
CanVec, 1/250 000, NRCan, 2017
Alberta Environment and Protected Areas, Government of Alberta, 2019
Satellite Image (Maxar) licensed, resolution 25 cm, Copyright © July 2024
Esri and its licensors. All rights reserved
Project Data, BBA, 2026

No projet BBA : 7757016-002000-4E 2026-03-26

0 150 300 m
UTM, Zone 12, NAD 83

Prepared By: E. Herbet Drawn By: A.Budge Verified By: F. Karcha

